

## Historic, archived document

Do not assume content reflects current scientific knowledge, policies, or practices.

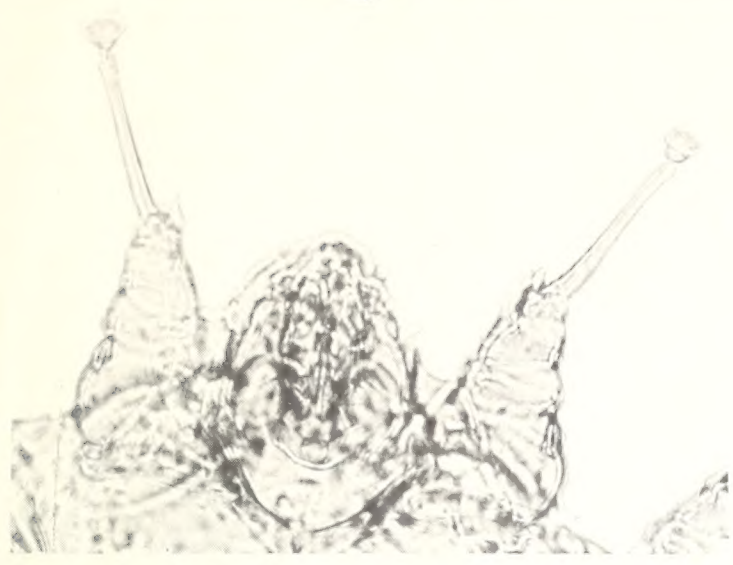


U.S. 87601  
AIU5

# ADULT SCABIES MITES

## MOUTH PARTS, PEDICELS & SUCKERS

(Comparative Features)



### SARCOPTES

- BODY - Rounded, short, backward projecting spines on dorsum
- MOUTHPARTS - Blunt
- PEDICELS (LEG STALKS) - Long and unjointed - third and fourth pair of legs do not usually extend beyond rim of body
- SUCKER DISKS - On legs 1, 2 of female; legs 1, 2, 4 of male
- MAXIMUM SIZE - Female, about 0.50mm.; male, about 0.30mm



### CHORIOPTES

- BODY - Oval, compressed laterally
- MOUTHPARTS - Blunt
- PEDICELS (LEG STALKS) - Short and unjointed - third pair of legs extend from the indentation in the body wall
- SUCKER DISKS - On legs 1, 2, 4 of female; legs 1, 2, 3, 4 of male
- MAXIMUM SIZE - Female, about 0.40mm.; male, about 0.35 mm

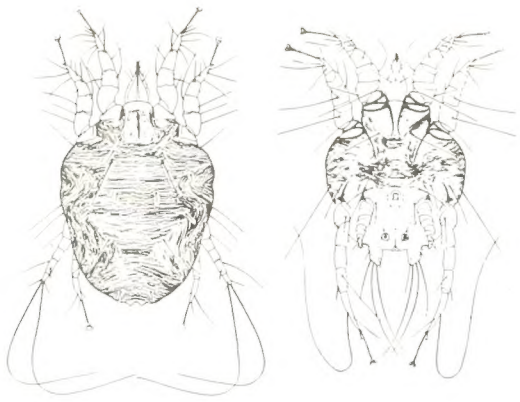


### PSOROPTES

- BODY - Oval
- MOUTHPARTS - Sharp, piercing, and elongated
- PEDICELS (LEG STALKS) - Long and jointed
- SUCKER DISKS - On legs 1, 2, 4 of female; legs 1, 2, 3 of male
- MAXIMUM SIZE - Female, about 0.80mm.; male, about 0.70mm

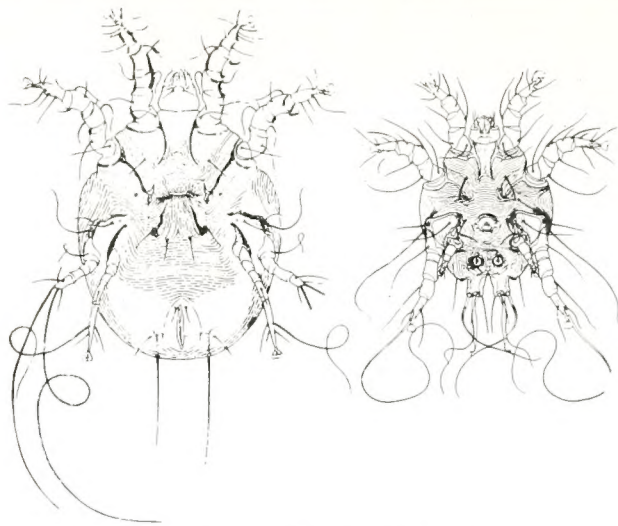
APHIS 91-19  
(Formerly APHS 91-2)  
February 1974

Veterinary Services  
Animal and Plant Health Inspection Service  
U.S. DEPARTMENT OF AGRICULTURE



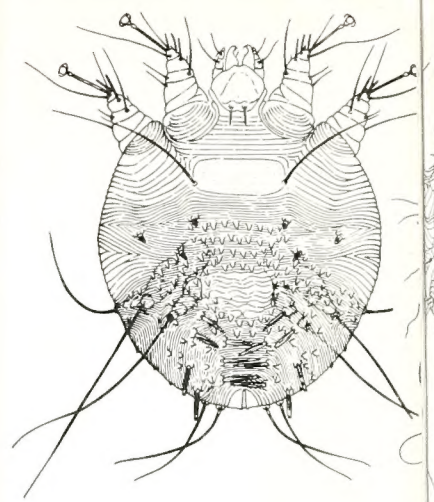
*Psoroptes equi* (Hering). Left, dorsal view of female. Right, ventral view of male.

**COMMON SCABIES MITE**



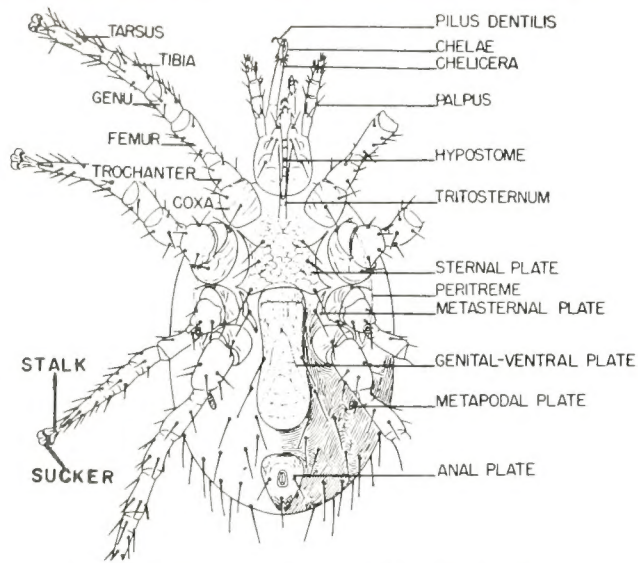
*Chorioptes bovis* (Gerlach). Left, ventral view of female. Right, ventral view of male.

**MANGE MITE**



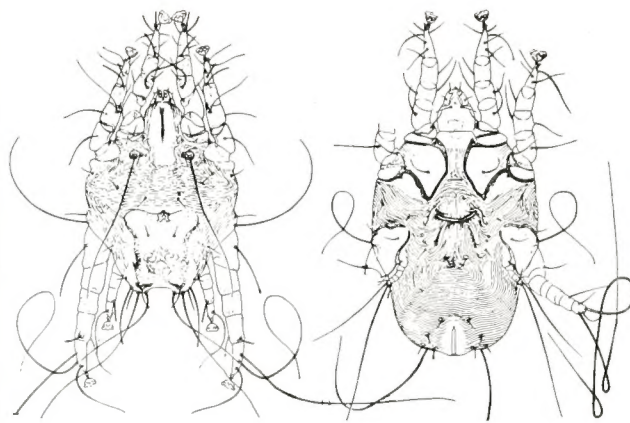
*Sarcoptes scabiei* (Degeer). Left, dorsal view of female. Right, ventral view of male.

**MANGE MITE**



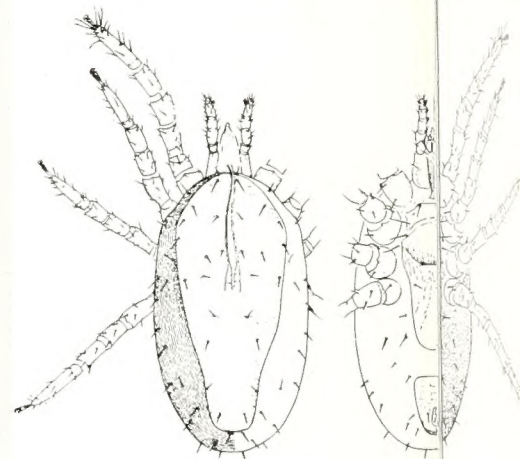
*Haemolaelaps glasgowi* (Ewing). Ventral view of female with morphological characters labeled.

**COMMON RODENT MITE**



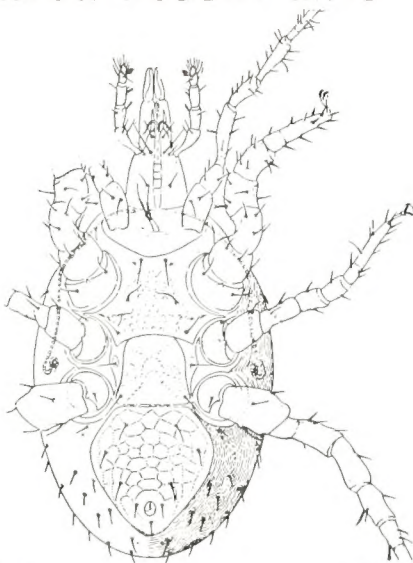
*Otodectes cynotis* (Hering). Left, dorsal view of male. Right, ventral view of female.

**EAR MITE**



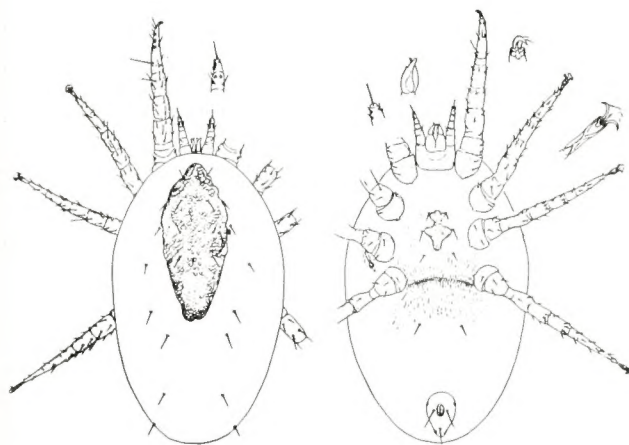
*Dermanyssus gallinae* (Degeer). Left, dorsal view of female. Right, ventral view of female.

**CHICKEN MITE**



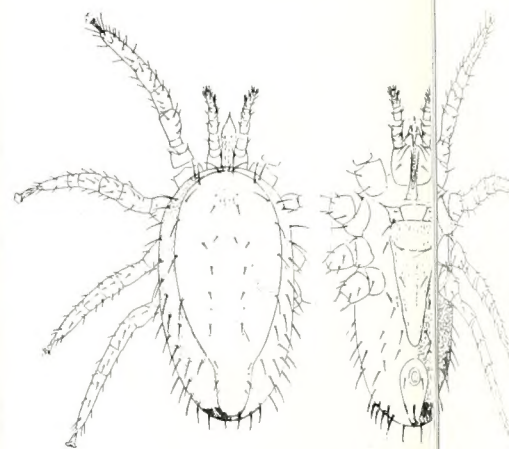
*Macrocheles muscaedomesticae* (Scopoli). Ventral view of female.

**HOUSE FLY MITE**



*Pneumonyssus caninum* (C. and R.). Left, dorsal view of female. Right, ventral view of female.

**DOG NASAL MITE**



*Ornithonyssus sylviarum* (C. and F.). Left, dorsal view of female. Right, ventral view of female.

**NORTHERN FOWL MITE**



Left, dor-  
tral view



*Psorergates simplex* (Tyrell).  
Left, female. *P. ovis*, palps,  
chelicera and tarsus I, right.

**SHEEP ITCH MITE**

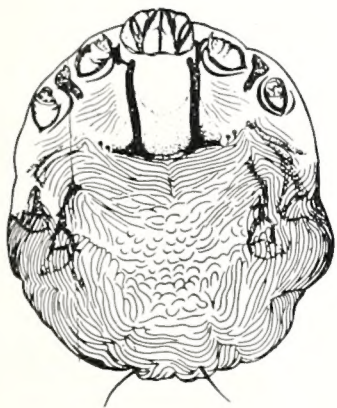


*Demodex*. Ventral view  
of female

**FOLLICLE MITE**

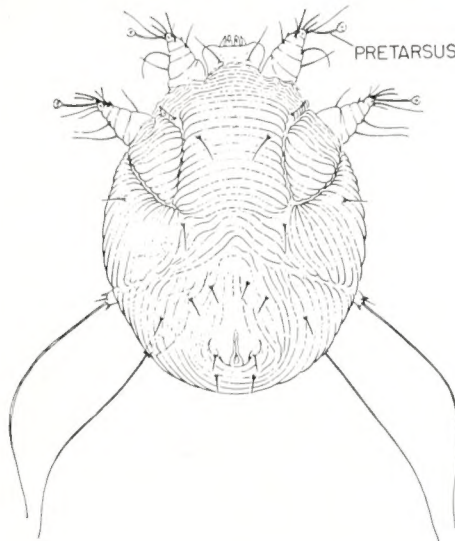


geer).  
Right,



*Cnemidoptes mutans*. Dor-  
sal view of female.

**SCALY-LEG MITE**

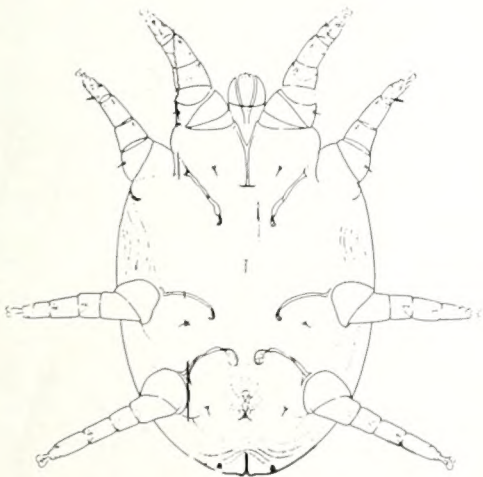


*Notoedres* sp. Dorsal view  
of female. Taken from  
squirrel.

**MITES  
FOUND  
ON OTHER  
ANIMALS**

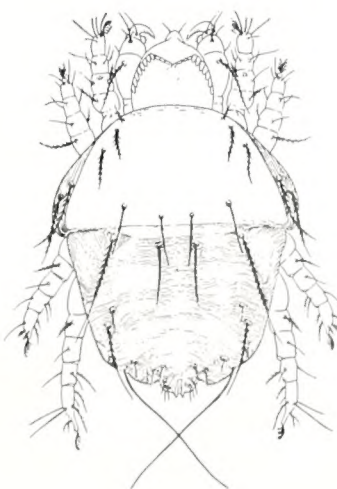


and F.).  
Right,



*Cytodites nudus* (Vizioli).  
Ventral view of male.

**AIR-SAC MITE**

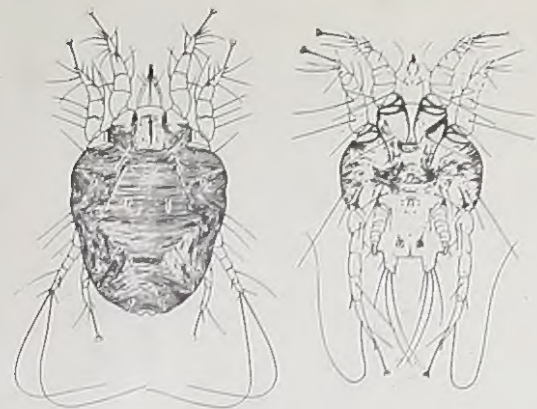


*Cheyletiella parasitivorax*  
(Megnin). Dorsal view of  
female.

**RABBIT FUR MITE**

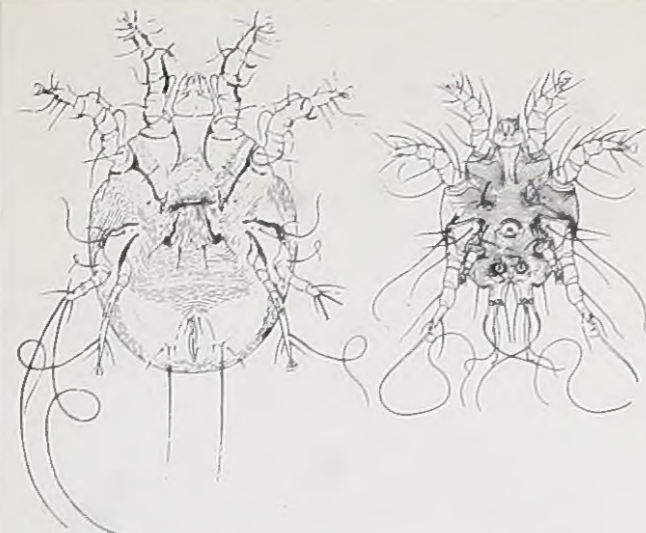
MITE





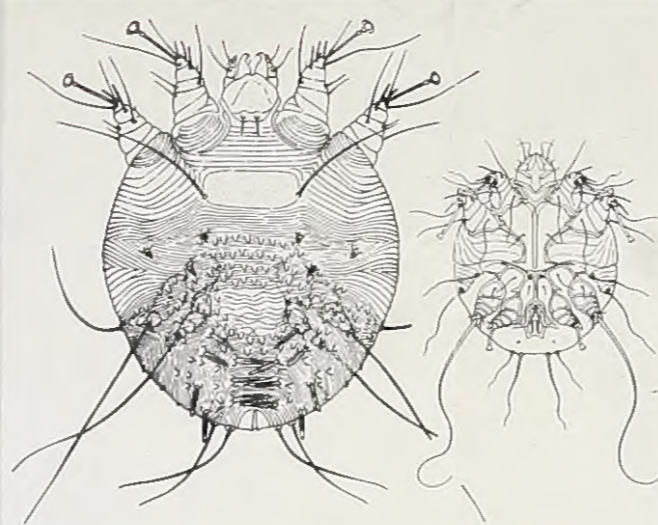
*Psoroptes equi* (Hering). Left, dorsal view of female. Right, ventral view of male.

**COMMON SCABIES MITE**



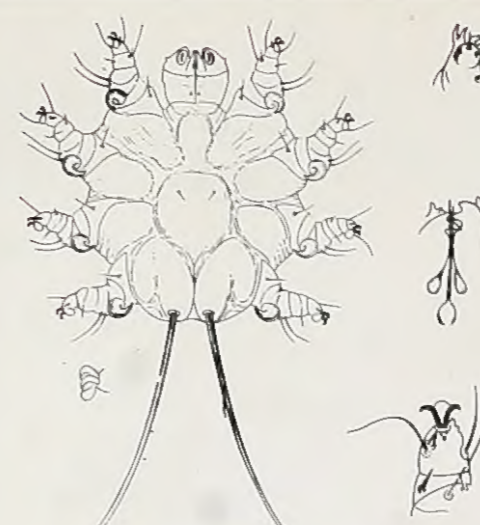
*Chorioptes bovis* (Gerlach). Left, ventral view of female. Right, ventral view of male.

**MANGE MITE**



*Sarcoptes scabiei* (Degeer). Left, dorsal view of female. Right, ventral view of male.

**MANGE MITE**



*Psorergates simplex* (Tyrell). Left, female. *P. ovis*, palps, chelicera and tarsus I, right.

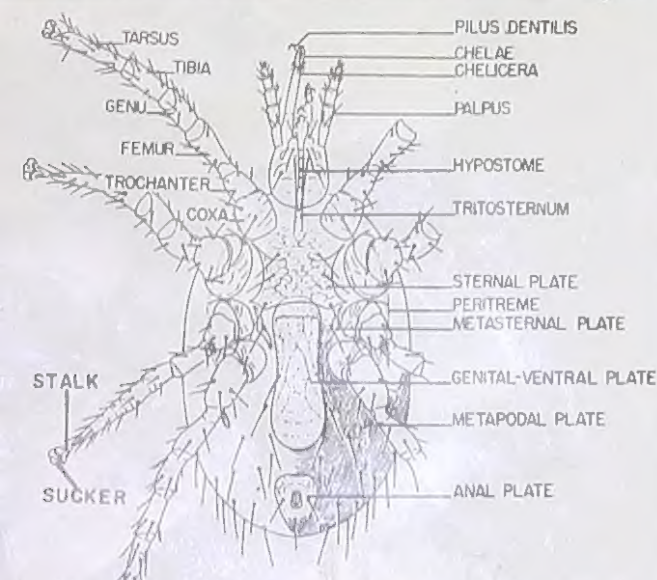
**SHEEP ITCH MITE**



*Demodex*. Ventral view of female

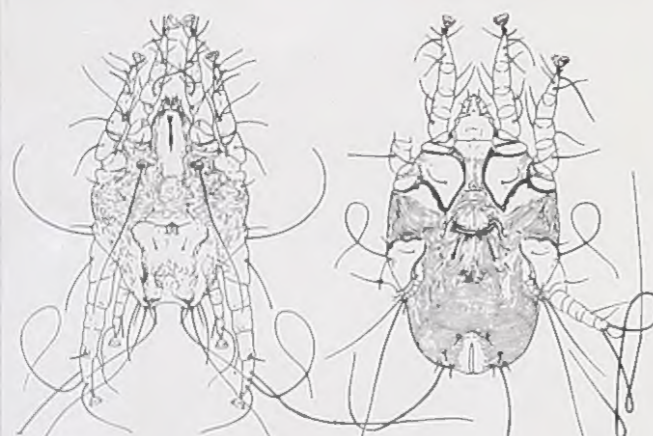
**FOLLICLE MITE**

**MITES FOUND ON LIVESTOCK**



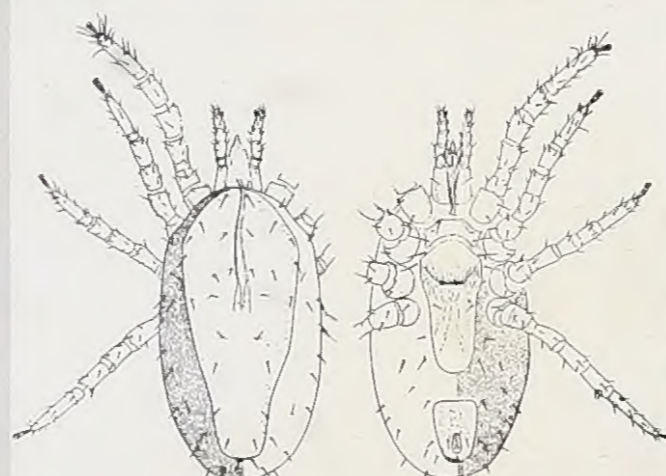
*Haemolaelaps glasgowi* (Ewing). Ventral view of female with morphological characters labeled.

**COMMON RODENT MITE**



*Otodectes cynotis* (Hering). Left, dorsal view of male. Right, ventral view of female.

**EAR MITE**



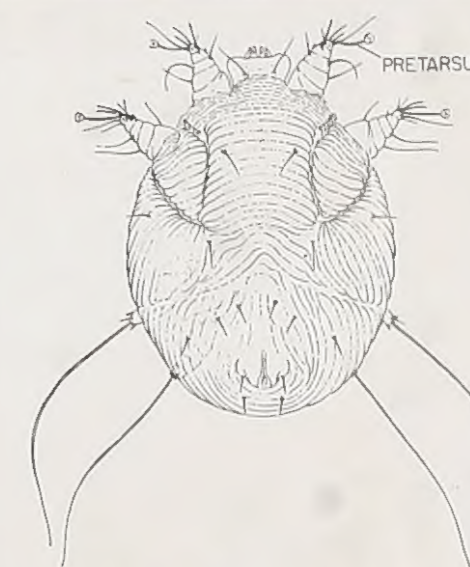
*Dermanyssus gallinae* (Degeer). Left, dorsal view of female. Right, ventral view of female.

**CHICKEN MITE**



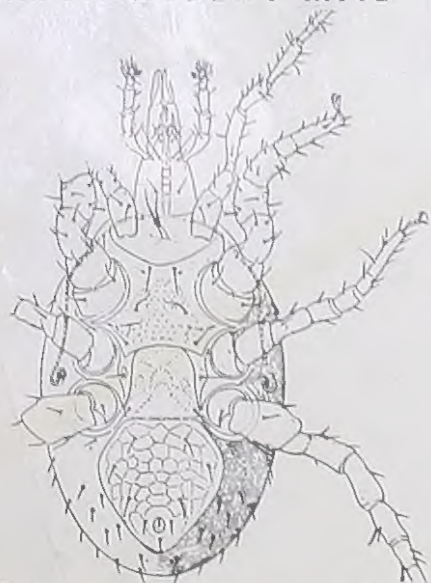
*Cnemidoptes mutans*. Dorsal view of female.

**SCALY-LEG MITE**



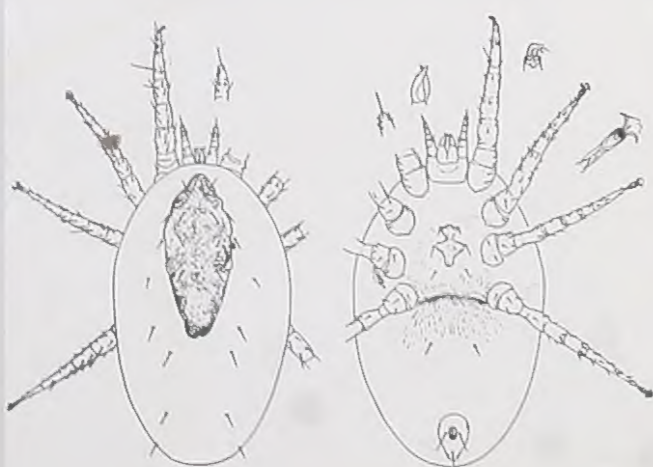
*Notoedres* sp. Dorsal view of female. Taken from squirrel.

**MITES FOUND ON OTHER ANIMALS**



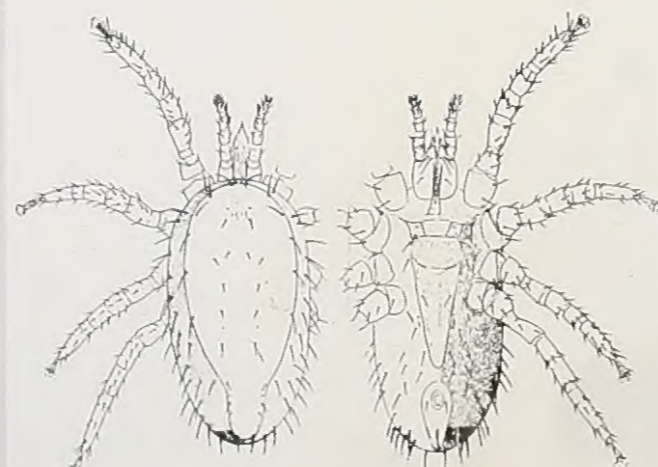
*Macrocheles muscaedomesticae* (Scopoli). Ventral view of female.

**HOUSE FLY MITE**



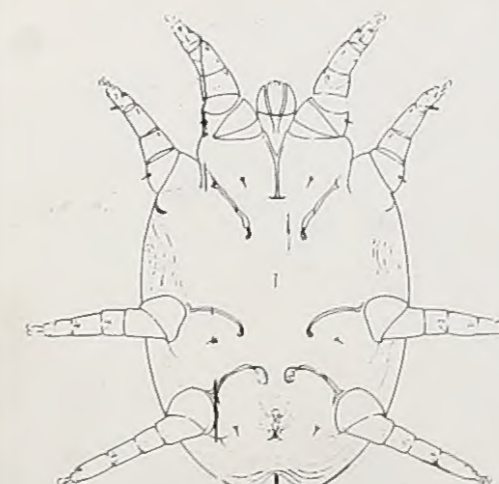
*Pneumonyssus caninum* (C. and R.). Left, dorsal view of female. Right, ventral view of female.

**DOG NASAL MITE**



*Ornithonyssus sylviarum* (C. and F.). Left, dorsal view of female. Right, ventral view of female.

**NORTHERN FOWL MITE**



*Cytodites nudus* (Vizioli). Ventral view of male.

**AIR-SAC MITE**



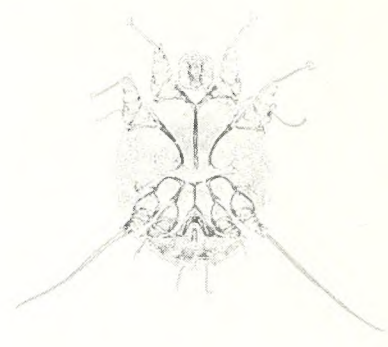
*Cheyletiella parasitivorax* (Megnin). Dorsal view of female.

**RABBIT FUR MITE**

# PHOTOMICROGRAPHS

**FEMALE**

**MALE**



U.S. DEPT. OF AGRICULTURE  
NAT'L AGRIC. LIBRARY  
RECEIVED

MAY 8 1971

ROSELAND MENT SECT 104  
FRONT SERIALS RECORDS

